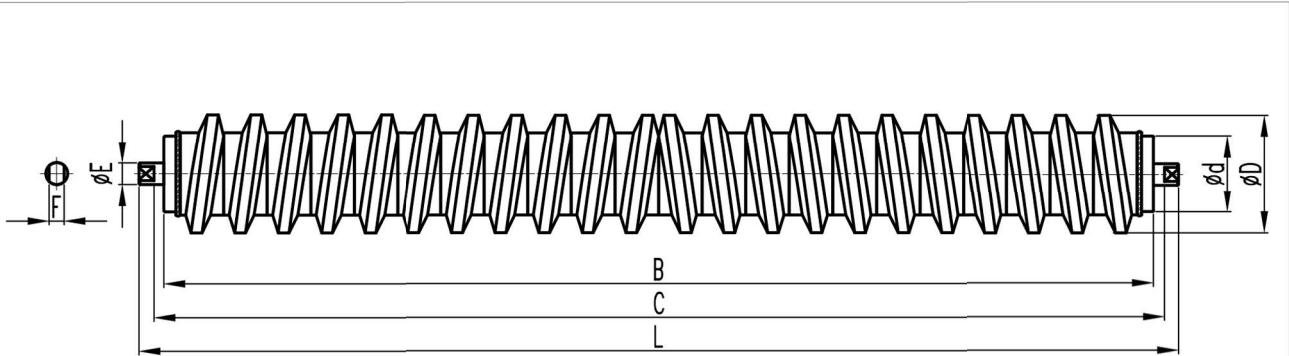
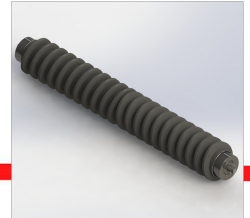


## RODILLOS LIMPIADORES HELICOIDALES (gomas contínuas)



ANCHO DE BANDA	Ø D	Ø d	Ø E	B	C	L	F	CANTIDAD DE GOMAS	TIPO DE RODAMIENTO
400	89	60 / 63,5	20	500	508	546	14	14	6.204
	108	70						12	
500	89	60 / 63,5	20	600	608	646	14	16	6.204
	108	70							
650	89	60 / 63,5	20	750	758	796	14	22	6.204
	108	70						20	
	133	89						16	
800	89	60 / 63,5	20	950	958	996	14	26	6.204
	108	70							
	133	89	25			1.002	18	22	6205 / 6305
1.000	108	70	20	1.150	1.158	1.196	14	30	6.204
	133	89							
	133	89	25			1.202	18	26	6205 / 6305
1.200	108	70	20	1.400	1.408	1.446	14	38	6.204
	133	89							
	133	89	25			1.452	18	32	6205 / 6305
1.400	108	70	20	1.600	1.608	1.646	14	44	6.204
	133	89							
	133	89	25			1.652	18	36	6205 / 6305
	133	89	30				22	6206 / 6306	